



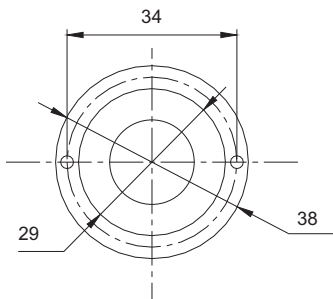
**W. Schmid AG**

LED-Technology  
the visible difference

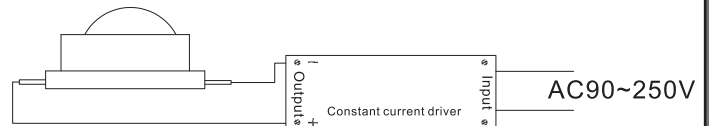
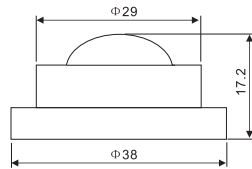
## Surface mounted LED spot ABS38C



ABS38C, 3.7 VDC



2 mounting holes  $\varnothing=2,5\text{mm}$ ,  
distance: 34mm



2 lateral cable outlets,  
Connection of power pack as shown

### Specifications:

Description:	Surface mounted LED spot ABS38C, 38mm, convex
Dimensions:	$\varnothing=38\text{mm}$ , $H=17.2\text{mm}$
Supply voltage:	3.7 VDC
Power consumption:	1.0W
Viewing angle:	$60^\circ$
Degree of protection:	IP 65
Class of protection:	III
Operating temperature:	-25 up to $+50^\circ\text{C}$
Material:	Colourless anodized aluminium, clear convex lens
Weight:	0.05kg
Connection:	Cable, length: 0.15-0.25m
Available ill. colours:	white, warm white, red, yellow, green, blue, orange,
Applications:	Pilot light, access control, machine indicator, wall lamp, floor lamp, alarm indicator etc.