



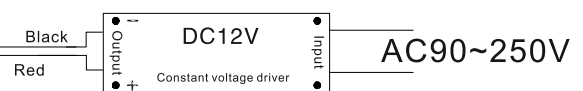
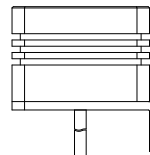
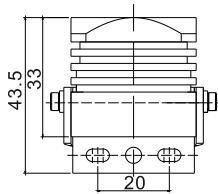
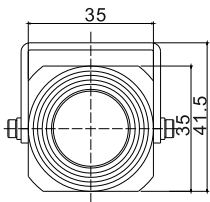
W. Schmid AG

LED-Technology
the visible difference

LED - spot SPL35



SPL35, 12 VDC



3 mounting holes D=3.5mm

Connection through power pack as pictured

Specifications:

Description:	SPL35, LED spot light 35mm
Dimensions:	W=35mm, H = 35mm, D=48mm
Supply voltage:	12 VDC
Power consumption:	1W/2W
Radiation angles:	8°/15°/45°
Degree of protection:	IP 65
Class of protection:	III
Operating temperature:	-25 up to +50°C
Material:	powder coated aluminum, clear PC lens
Weight:	0.095kg
Connection:	cable connection 0.30-0.40m
Available ill. colors:	white, warm white, red, yellow, green, blue, orange
Applications:	machine illumination, working light, pilot light, decorative lamp, garden lamp, etc.